

A PER SE PROJECT



ETHOS

BELCONNEN / LAKESIDE



“Our vision for Ethos is to deliver an *elevated* level of design and construction, creating *timeless* architecture that will be *enjoyed* for many generations.”

A handwritten signature in black ink, appearing to read 'Anthony Tokich', with a long horizontal flourish extending to the right.

ANTHONY TOKICH  
PER SE DEVELOPMENTS





The ethos of a culture, community or organisation is the characteristic spirit manifested in its attitudes or aspirations. Now the aspirations of a dedicated team of designers and builders are expressed in concrete form in Ethos, the second stage of the ground-breaking Cirrus development. A commitment to honest, purposeful and timeless design continues in this elegant lakefront tower. Described by leading architects Mathieson as "ambitiously simple", Ethos embraces its unique location, with every residence facing north across Lake Ginninderra, the Brindabella ranges and lush surrounds.

It's not only the quality of the design that's elevated at Ethos. Along with Cirrus, the striking tower represents a new chapter in construction for Belconnen and for Canberra. Innovative building methods create optimal thermal mass and robust internal walls, reducing energy consumption and improving acoustics. The result is a comfortable and peaceful living environment.

## *EVERY* EXPERIENCE ELEVATED

*Architecture by Mathieson*



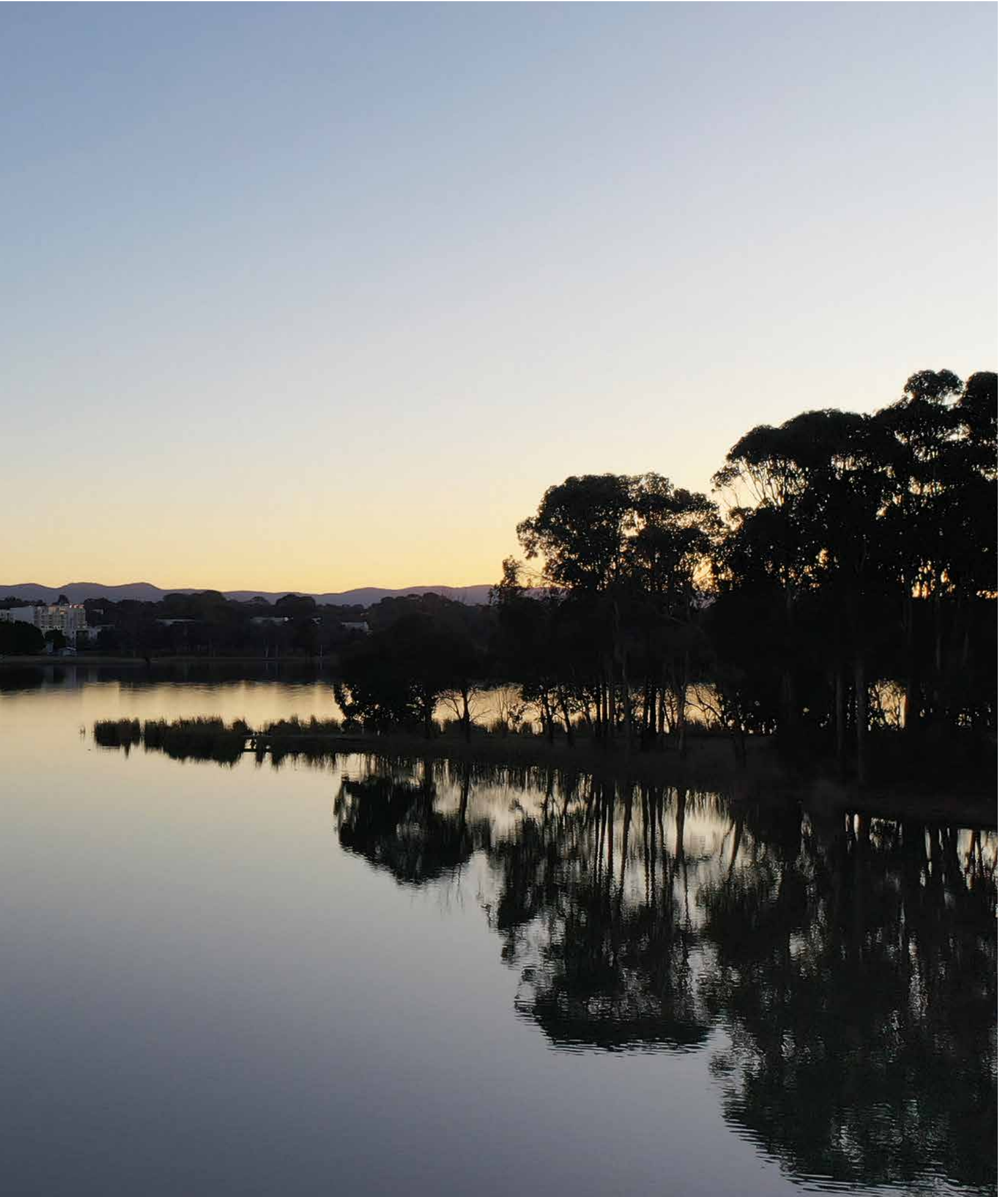


ETHOS

CIRRUS







## THE DEVINE IS IN THE *DETAILS*

Ethos comprises an inspired collection of two and three bedroom apartments, as well as several three and four-bedroom, two-storey penthouses that occupy the top two levels of the tower. Every residence is enveloped in northern light. Balconies overlooking the lake are a natural extension of the airy open-plan living spaces. And when the sun goes down, the clever lighting design takes over, allowing you to create the perfect ambience for every mood or occasion.

Designer kitchens feature stone bench tops and beautifully detailed joinery, while Italian-made Smeg appliances combine brilliant aesthetics with high technology. Throughout your apartment, comfort is a given with reverse cycle air conditioning to living and bedrooms. Penthouses offer luxury living with many additional features including upgraded appliances, stunning tiled floors to the living areas, and an internal staircase and lift.





## Fixtures

- 1 Smeg Built-In Oven
- 2 Smeg Ceramic Cooktop
- 3 Smeg Integrated Dishwasher
- 4 Smeg Built-In Rangehood



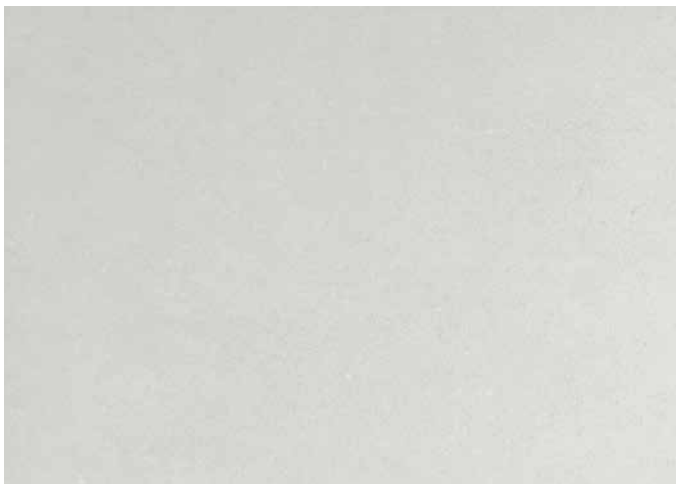
**Finishes - Common**

Benchtop /  
Splashback



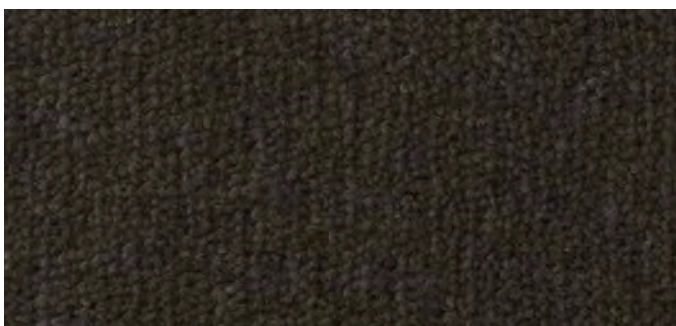
Floor →  
Tile

Bath →→  
Tile

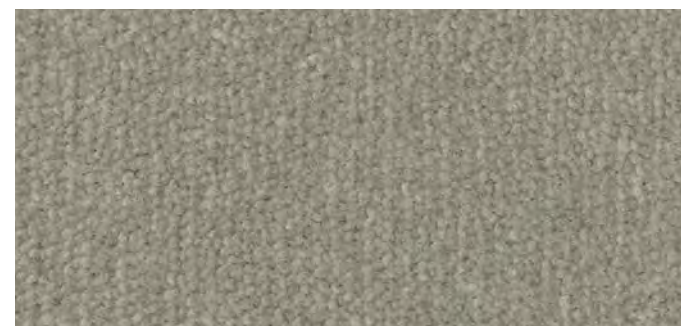


**Finishes - Dusk**

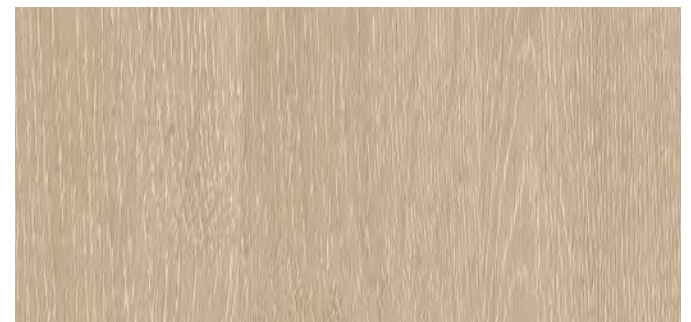
Carpet



**Finishes - Luminary**



Joinery



CIRRUS ETHOS

CANBERRA CBD  
9KM

UNIVERSITY OF CANBERRA  
2.5KM

BELCONNEN MARKETS  
1.5KM

WESTFIELD  
700M



THE BEST OF  
*ALL* WORLDS

## LAKE GINNINDERRA



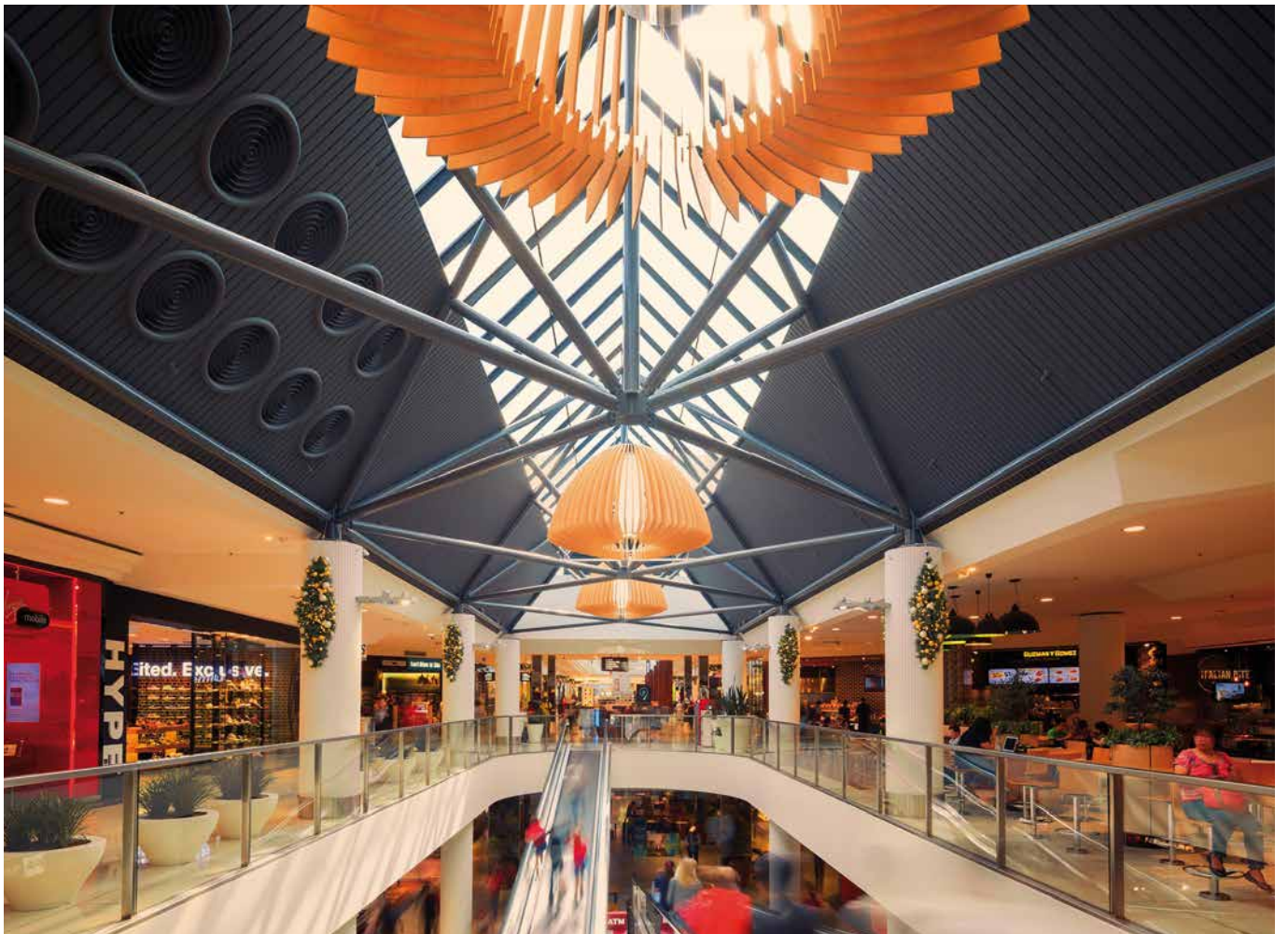
It's no wonder Belconnen is attracting new residents in their thousands. Easily accessible from the city, its attractions are diverse. Lakeside tranquillity contrasts with a vibrant shopping precinct. Extensive parklands complement a thriving arts centre and a cosmopolitan mix of nearby eateries.

Ethos is ideally located on the lakefront, a 15-minute drive to Canberra CBD and adjacent to Westfield Belconnen with its department stores, supermarkets, cinema and around 270 specialty stores. Within a short walk are a wide range of town centre businesses, the fresh food market and recreation facilities including gyms and the Canberra International Sports and Aquatic Centre.

Belconnen is an education hub, with the University of Canberra, the prestigious Radford College and many other primary and secondary schools. The GIO Stadium is home to the Brumbies and the Canberra Raiders and hosts a range of events and music festivals.



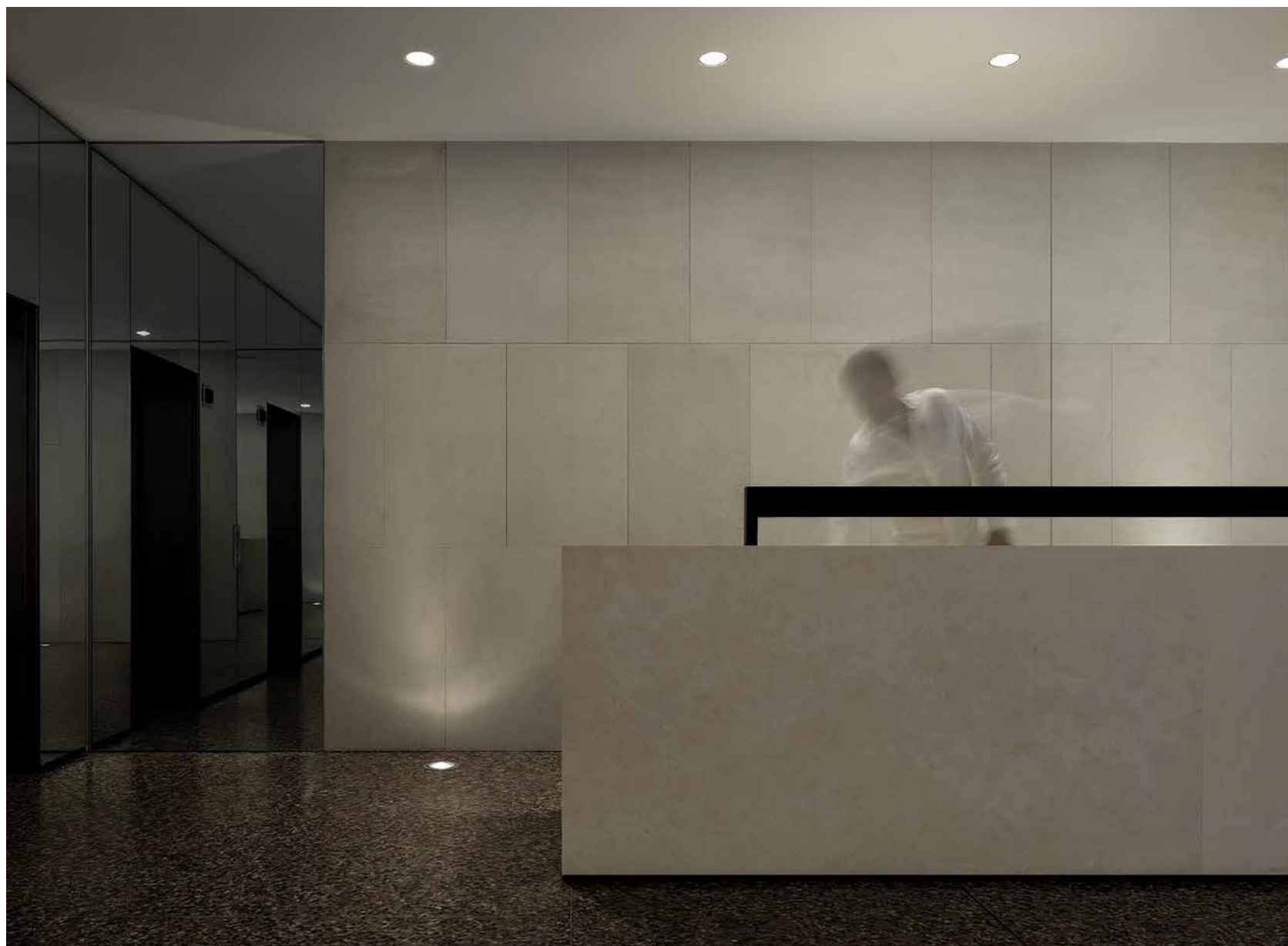




# ETHOS PROJECT *TEAM*

## **PER SE DEVELOPMENTS**

Per Se is one of Australia's leading residential and commercial property developers. The longstanding family business was founded in Canberra, in 1966, and has since expanded its reach. Anthony Tokich currently serves as the Managing Director of the company. Anthony and his team have been recognised by various industry leaders, including the Housing Industry Association, who continue to support Per Se's enthusiasm for transforming a new skyline with artful and elevated design.





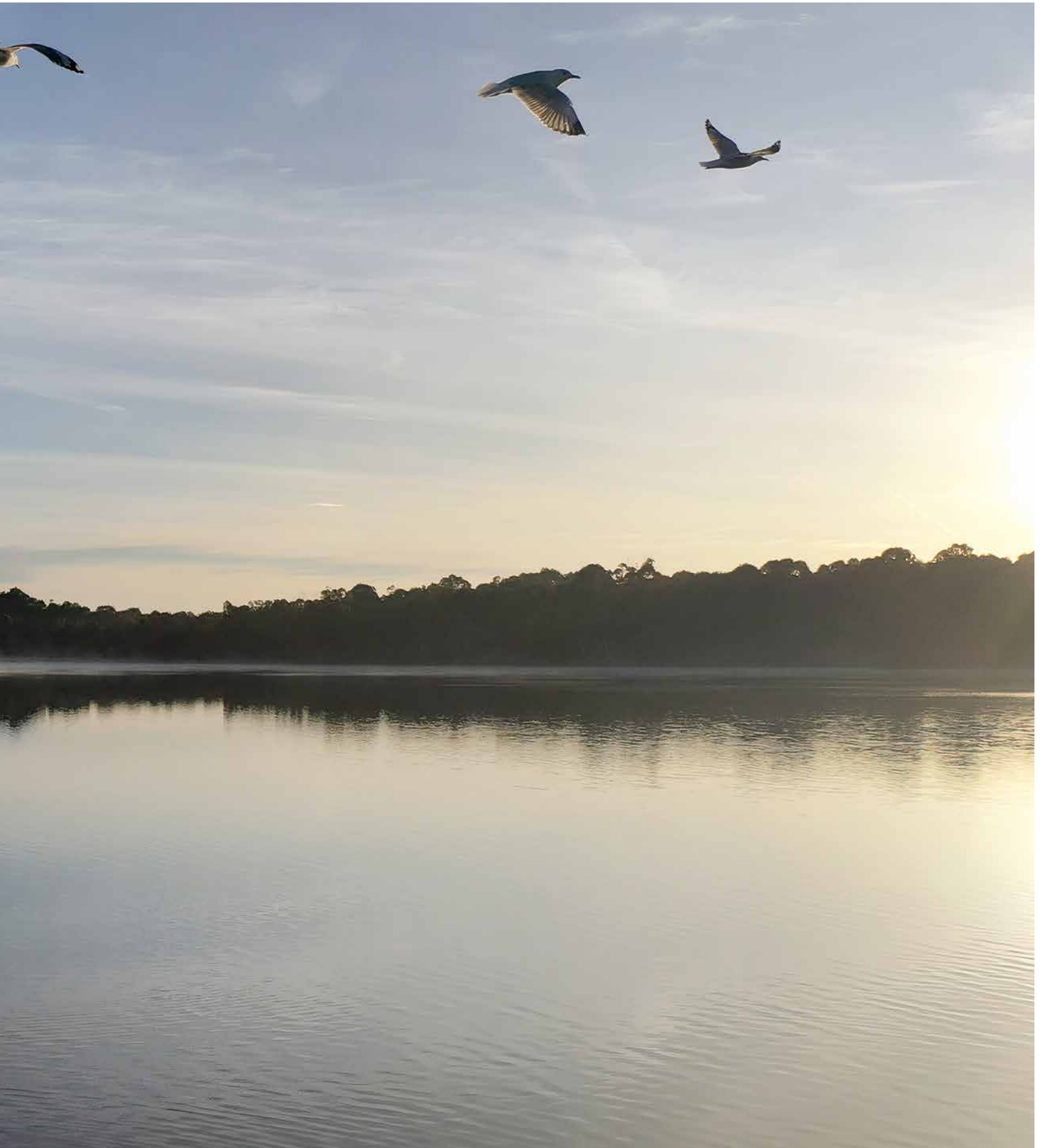
### **MATHIESON Architecture**

Mathieson is a leading architectural practice based in Sydney. The company was established in 2010 by colleagues Harlan Redgen and Phillip Mathieson, born of a desire to bring the art of understatement back to the residential and hospitality sectors. The partners lead an approach to creativity that is grounded in Modernist principles of considered design and rigorous simplicity. Central to this philosophy is a strong sense of scale, form and material.

The creatives attune themselves to the play of light and shadow, with an emphasis on finely detailed spaces built to outlast changing fashions. The Directors have significant experience in conceiving and executing high-end projects across a range of residential, multi-residential, commercial, hotel and hospitality environments. Their work can be found across all of Sydney's prime waterfront suburbs. Mathieson's unique defiance of conventional thinking has seen their work being commissioned locally and internationally.

Mathieson was awarded at the Asia Pacific Property Awards in 2013 for Best Architecture Single Residence Australia. Mathieson is an A+ Practice Member of the Australian Institute of Architects.





**Sales Enquiries**



1300 120 454



0413 168 733

**Developer**

**PER SE**

[per-se.com.au](http://per-se.com.au)

**Architecture & Interiors**

**MATHIESON**

[mathiesonarchitects.com](http://mathiesonarchitects.com)

[ethosbelconnen.com.au](http://ethosbelconnen.com.au)

Colliers does not guarantee, warrant or represent that the information contained in this advertising and marketing document is correct. Any interested parties should make their own enquiries as to the accuracy of the information. Colliers excludes all inferred or implied terms, conditions and warranties arising out of this document and any liability for loss or damage arising there from. Colliers is committed to adhering to the Privacy Act, 1988 (Cth) and related Australian Privacy Principles. This policy was updated in August 2018. The most recent policy can be found at [www.colliers.com.au/privacy](http://www.colliers.com.au/privacy).



