



Residence  
**2A**

- 2 Bedrooms
- 2 Bathrooms
- 1 Carpark\*
- Study
- Balcony

Internal Area: 81m<sup>2</sup>  
External Area: 13m<sup>2</sup>  
Total Area: 94m<sup>2</sup>

**Unit Numbers**

- 703, 706, 707
- 803, 806, 807
- 903, 906, 907
- 1003, 1006, 1007
- 1103, 1106, 1107

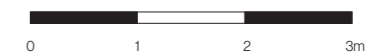
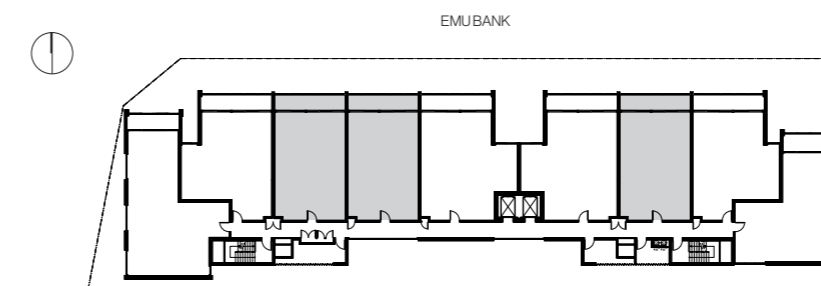
Areas are based on a Gross Floor area basis  
It excludes parking and external storage areas.

\* Refer to Carpark Schedule

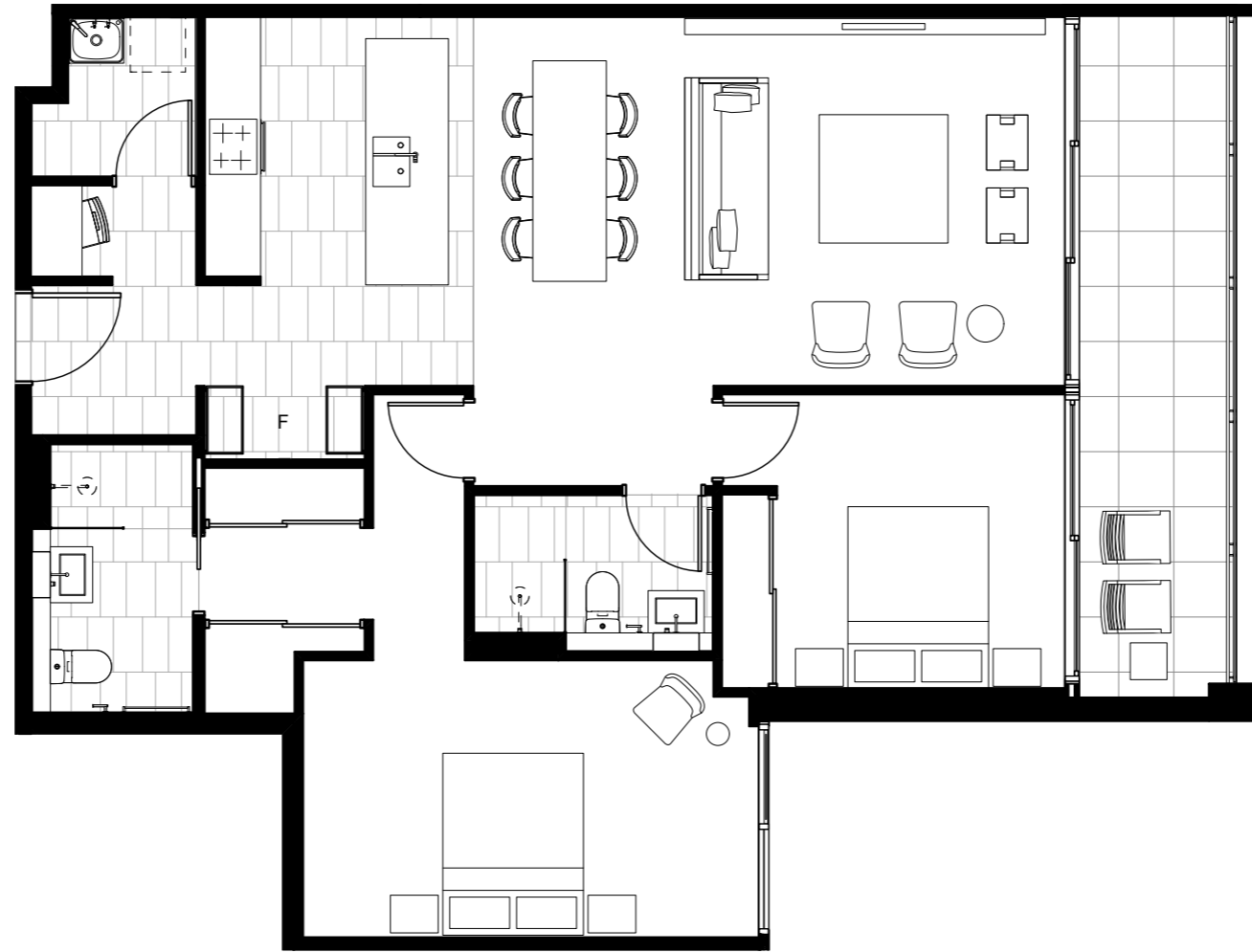
**Levels**

- Level 7
- Level 8
- Level 9
- Level 10
- Level 11

**Location Plan**



**DISCLAIMER**  
Colliers International, Per Se Developments and Azalea Property Holdings do not guarantee, warrant or represent that the information contained in this advertising and marketing document is correct. We exclude all inferred or implied terms, conditions and warranties arising out of this document and any liability for loss or damage arising there from. Any interested parties should make their own enquiries as to the accuracy of the information. Colliers International, Per Se Developments and Azalea Property Holdings may use alternative products and make adjustments to the plans and specifications due to unforeseen construction or design modifications and item availability.



Residence  
**2D**

- 2 Bedrooms
- 2 Bathrooms
- 1 or 2 Carparks\*
- Study
- Balcony

Internal Area: 94m<sup>2</sup>  
External Area: 12m<sup>2</sup>  
Total Area: 106m<sup>2</sup>

**Unit Numbers**

- Single**  
405, 505
- Tandem**  
605, 705, 805
- Double**  
905, 1005, 1105

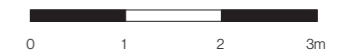
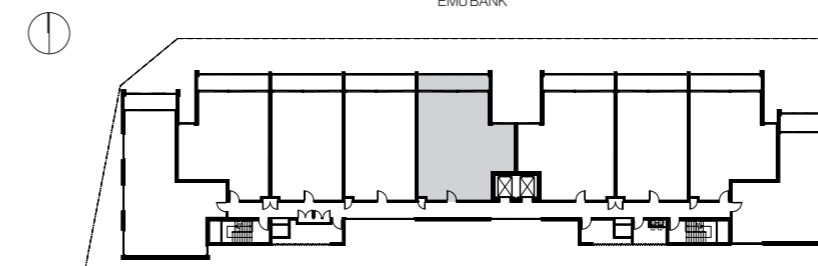
Areas are based on a Gross Floor area basis  
It excludes parking and external storage areas.

\* Refer to Carpark Schedule

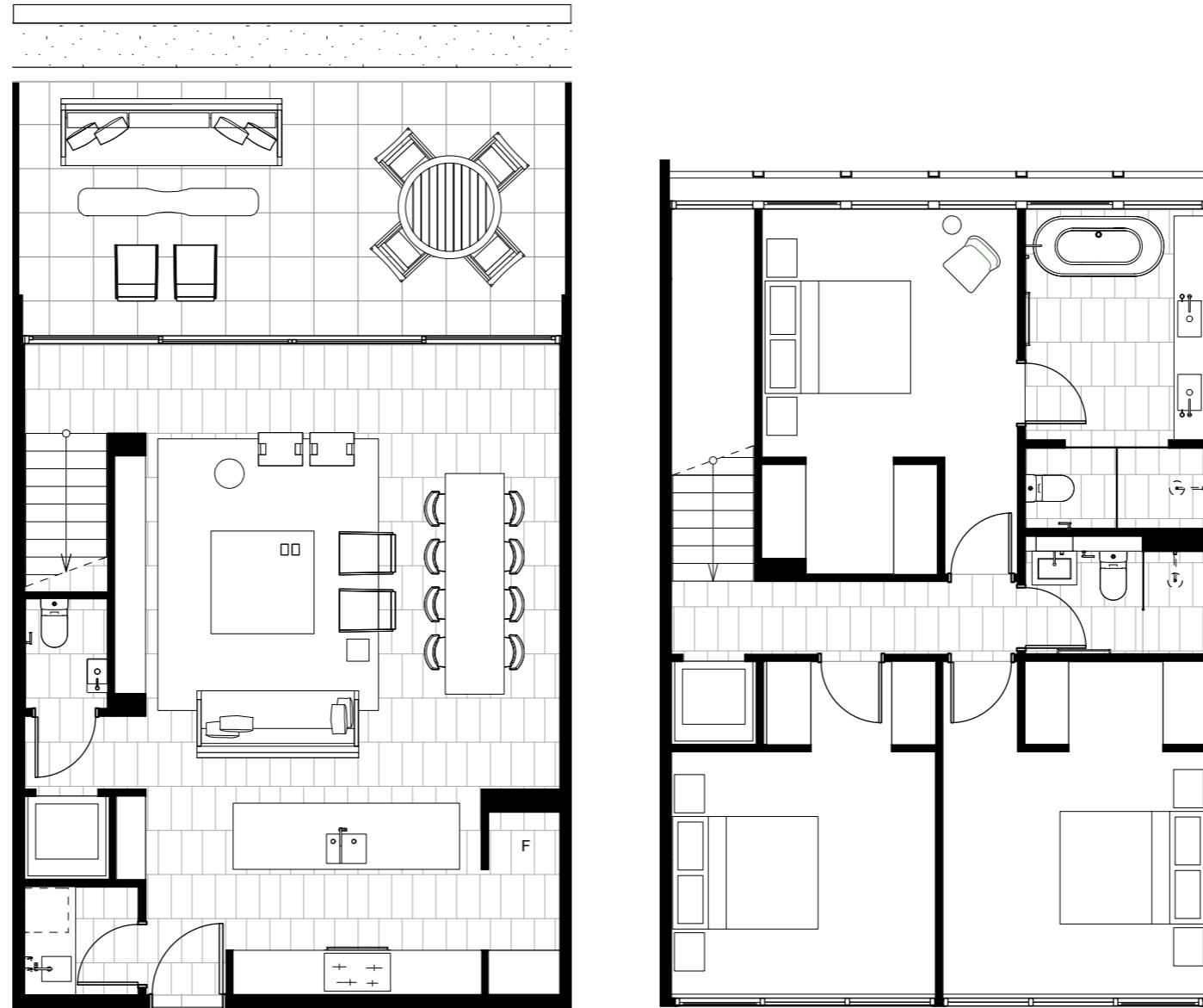
**Levels**

- Level 4
- Level 5
- Level 6
- Level 7
- Level 8
- Level 9
- Level 10
- Level 11

**Location Plan**



DISCLAIMER  
Colliers International, Per Se Developments and Azalea Property Holdings do not guarantee, warrant or represent that the information contained in this advertising and marketing document is correct. We exclude all inferred or implied terms, conditions and warranties arising out of this document and any liability for loss or damage arising there from. Any interested parties should make their own enquiries as to the accuracy of the information. Colliers International, Per Se Developments and Azalea Property Holdings may use alternative products and make adjustments to the plans and specifications due to unforeseen construction or design modifications and item availability.



Residence  
**3C**

- 3 Bedrooms
- 2.5 Bathrooms
- 2 Carparks
- Internal Lift
- Garden Terrace

Internal Area: 137m<sup>2</sup>  
External Area: 25m<sup>2</sup>  
Total Area: 162m<sup>2</sup>

**Unit Numbers**

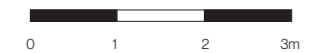
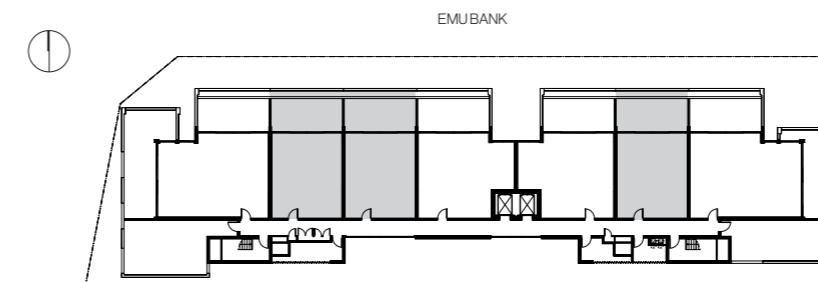
- 1202
- 1205
- 1206

Areas are based on a Gross Floor area basis  
It excludes parking and external storage areas.  
\* Refer to Carpark Schedule

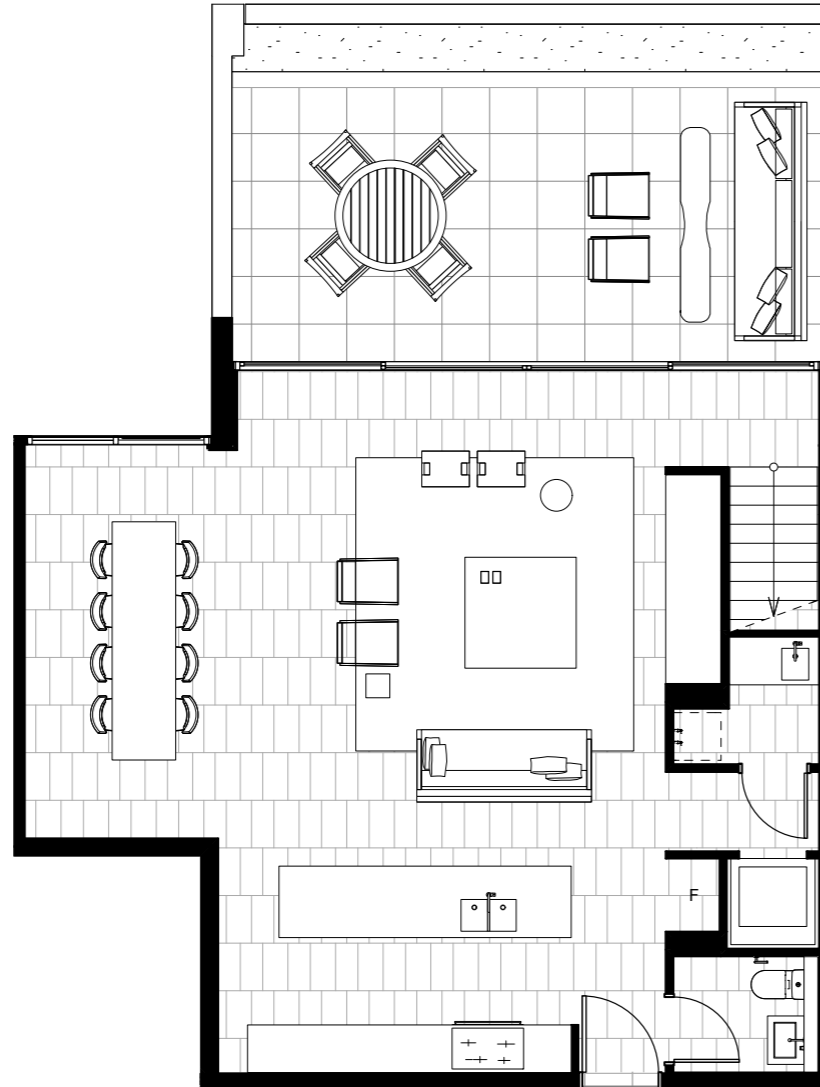
**Levels**

Level 12 + 13

**Location Plan**



**DISCLAIMER**  
Colliers International, Per Se Developments and Azalea Property Holdings do not guarantee, warrant or represent that the information contained in this advertising and marketing document is correct. We exclude all inferred or implied terms, conditions and warranties arising out of this document and any liability for loss or damage arising there from. Any interested parties should make their own enquiries as to the accuracy of the information. Colliers International, Per Se Developments and Azalea Property Holdings may use alternative products and make adjustments to the plans and specifications due to unforeseen construction or design modifications and item availability.



Residence  
**4A**

- 4 Bedrooms
- 2.5 Bathrooms
- 3 Carparks\*
- Internal Lift
- Garden Terrace

Internal Area: 180m<sup>2</sup>  
External Area: 25m<sup>2</sup>  
Total Area: 205m<sup>2</sup>

**Unit Numbers**

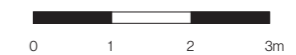
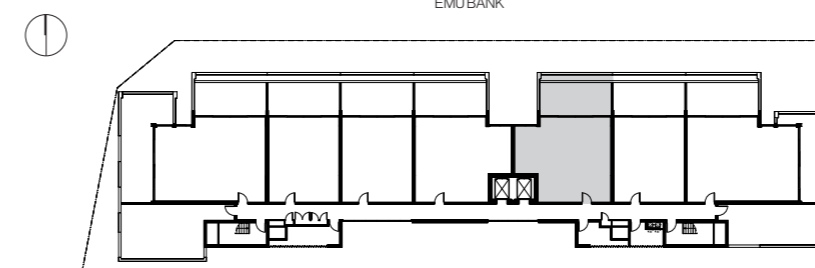
1203

Areas are based on a Gross Floor area basis  
It excludes parking and external storage areas.  
\* Refer to Carpark Schedule

**Levels**

Level 12 + 13

**Location Plan**



**DISCLAIMER**  
Colliers International, Per Se Developments and Azalea Property Holdings do not guarantee, warrant or represent that the information contained in this advertising and marketing document is correct. We exclude all inferred or implied terms, conditions and warranties arising out of this document and any liability for loss or damage arising there from. Any interested parties should make their own enquiries as to the accuracy of the information. Colliers International, Per Se Developments and Azalea Property Holdings may use alternative products and make adjustments to the plans and specifications due to unforeseen construction or design modifications and item availability.